

Breast cancer can affect anyone.  
Checking your chest monthly could save your life.  
When breast cancer is diagnosed early, treatments are  
more effective and survival rates are higher.  
Head to **@coppaFeel** on social channels to find out more.



Breast cancer can affect anyone.  
Checking your chest monthly could save your life.  
When breast cancer is diagnosed early, treatments are  
more effective and survival rates are higher.  
Head to **@coppaFeel** on social channels to find out more.



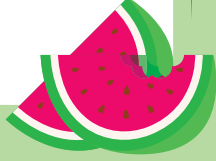
Breast cancer can affect anyone.  
Checking your chest monthly could save your life.  
When breast cancer is diagnosed early, treatments are  
more effective and survival rates are higher.  
Head to **@coppaFeel** on social channels to find out more.



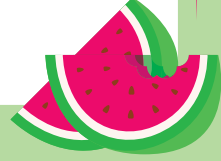
Breast cancer can affect anyone.  
Checking your chest monthly could save your life.  
When breast cancer is diagnosed early, treatments are  
more effective and survival rates are higher.  
Head to **@coppaFeel** on social channels to find out more.



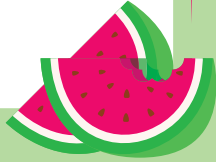
Breast cancer can affect anyone.  
Checking your chest monthly could save your life.  
When breast cancer is diagnosed early, treatments are  
more effective and survival rates are higher.  
Head to **@coppafeel** on social channels to find out more.



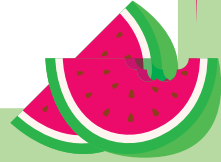
Breast cancer can affect anyone.  
Checking your chest monthly could save your life.  
When breast cancer is diagnosed early, treatments are  
more effective and survival rates are higher.  
Head to **@coppafeel** on social channels to find out more.



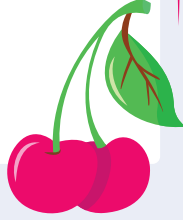
Breast cancer can affect anyone.  
Checking your chest monthly could save your life.  
When breast cancer is diagnosed early, treatments are  
more effective and survival rates are higher.  
Head to **@coppafeel** on social channels to find out more.



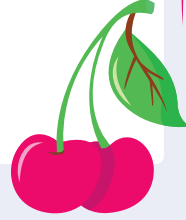
Breast cancer can affect anyone.  
Checking your chest monthly could save your life.  
When breast cancer is diagnosed early, treatments are  
more effective and survival rates are higher.  
Head to **@coppafeel** on social channels to find out more.



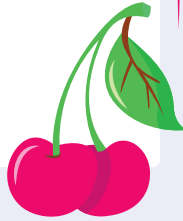
Breast cancer can affect anyone.  
Checking your chest monthly could save your life.  
When breast cancer is diagnosed early, treatments are  
more effective and survival rates are higher.  
Head to **@coppaFeel** on social channels to find out more.



Breast cancer can affect anyone.  
Checking your chest monthly could save your life.  
When breast cancer is diagnosed early, treatments are  
more effective and survival rates are higher.  
Head to **@coppaFeel** on social channels to find out more.



Breast cancer can affect anyone.  
Checking your chest monthly could save your life.  
When breast cancer is diagnosed early, treatments are  
more effective and survival rates are higher.  
Head to **@coppaFeel** on social channels to find out more.



Breast cancer can affect anyone.  
Checking your chest monthly could save your life.  
When breast cancer is diagnosed early, treatments are  
more effective and survival rates are higher.  
Head to **@coppaFeel** on social channels to find out more.

